



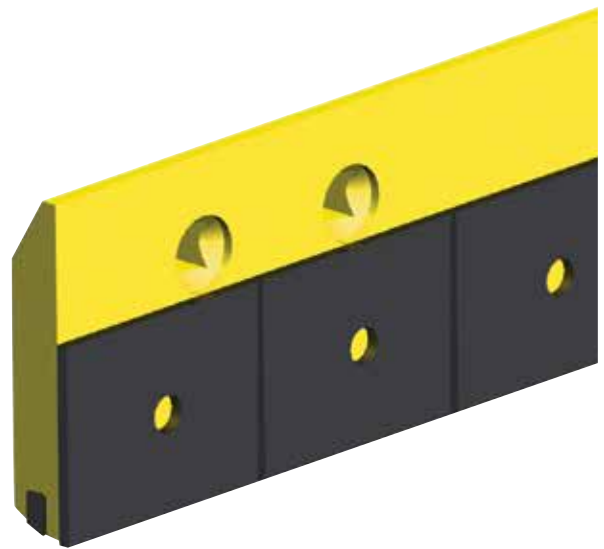
Armored Blades

Hardened-Steel Armored Blades

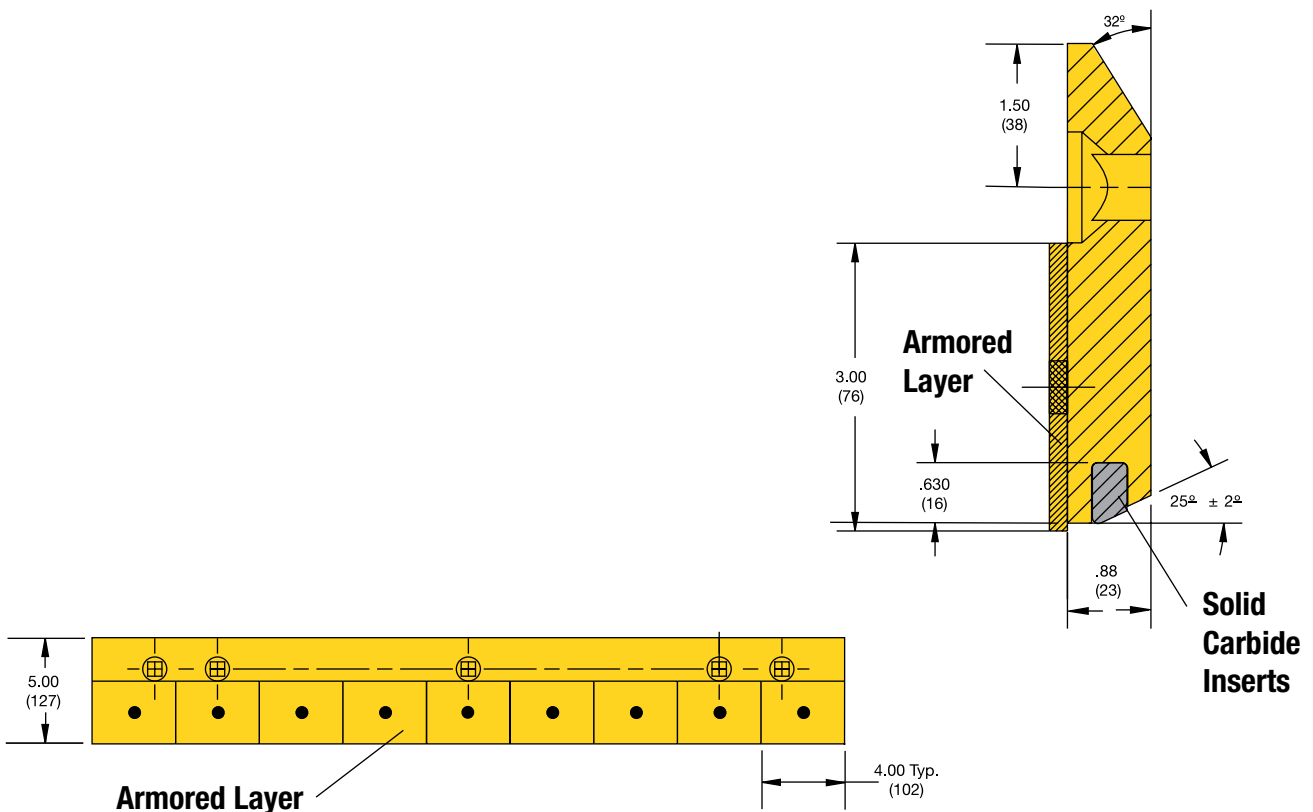
Kennametal Armored Blades are designed to provide better protection of the steel face of standard carbide insert blades. When working on unpaved surfaces, the mild steel can deteriorate, exposing the carbide insert to greater impact and causing blade breakage. Kennametal Armored Blades are the economical choice to prevent this type of wear.

Kennametal Armored Blades use a securely welded, hardened-steel plate to protect and further strengthen the inserts. The wear-resistant, armored blades are .875" (22mm) thick in the bolt area and 1.0625" (27mm) thick in the armor plate area. The blades are 5" wide (127mm) (tall) and are available in 36" (914mm), 48" (1219mm), and 60" (1524mm) lengths.

Like all Kennametal grader blades, they are "standard highway punched" to fit all makes and models of graders.



- Economical choices for higher-impact applications.
- Protects carbide insert by reinforcing the steel face with a securely welded, hardened-steel plate.
- Reduces blade wear caused by unpaved surfaces, extending blade life by three to five times as compared to standard carbide blades.
- Available in 3ft (914mm), 4ft (1219mm), and 5ft (1524mm) lengths.
- “Standard highway punched” to fit all makes and models.



■ Armored Blades Ordering Information

thickness		width		length		order number	bolt diameter		weight	
in	mm	in	mm	in	mm		in	mm	kg	lbs
.875	22	5	127	36	914	1105976	.625	16	21	47
.875	22	5	127	48	1219	1013304	.625	16	29	63

■ Replacement Wear Patch

thickness		width		length		order number	bolt diameter		weight	
in	mm	in	mm	in	mm		in	mm	kg	lbs
.875	5	3	76	4	102	1012159	—	—	.005	.01